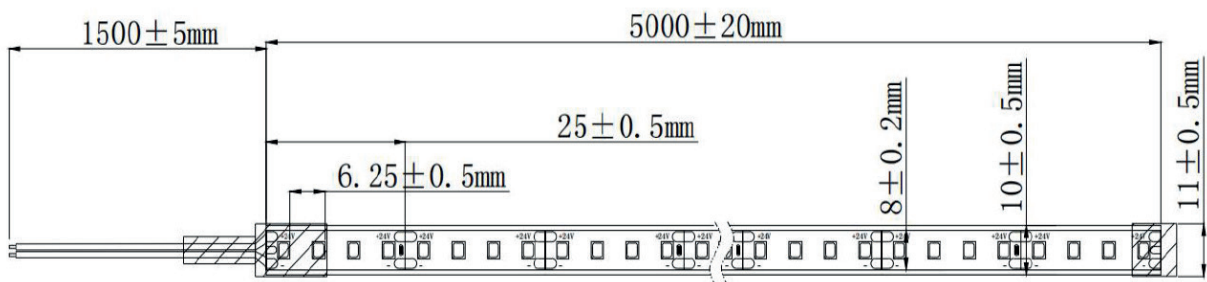


- 21041 0010 - LEDFLEX OUT HE 927 5m**
- 21041 0020 - LEDFLEX OUT HE 930 5m**
- 21041 0030 - LEDFLEX OUT HE 940 5m**

1. Specifications

Number Led/m:	160pcs
Power W/m ±10%:	3W
PCB Width:	8mm
CRI/SDCM:	>90 / SDCM<3
Working Length(10% voltage drop)	5m
Cut size:	25mm
Packing length:	5m
Beam angle:	120°
Bend diameter:	60mm
Operating Temp.:	-20°~45°C
Storage Temp.:	0°~60°C
L70:	>54 000h
Eye security:	IEC 62471
Protection class:	EN 60529
Safety Requirements:	EN 62031 IEC 60598-1
EMC / radio disturbance characteristics:	EN 55015
ROHS:	Yes
CE:	Yes



LEDsGO BV

Drieslaan 6 | B-8560 Wevelgem (Moorsele) | Tel +32 (0) 56 424 992
 BTW BE 0824.326.685 | ING IBAN BE47 3630 7083 3480 | BIC BBRUBEBB

2. Electronic & output data

- Input voltage: 24VDC
- Typical power: 3W/m
- CRI: 90

Part No	CCT	CRI	Typ. power	LM/W	Typical Lumen	VDC	IP
21041 0010	2700K	>90	3W/m	136lm/W	408lm/m	24	66
21041 0020	3000K	>90	3W/m	143lm/W	429lm/m	24	66
21041 0030	4000K	>90	3W/m	146m/W	438lm/m	24	66

Cautions:

1. The given data are typical value, Due to tolerances of the production process and electrical components, electrical power can be $\pm 10\%$
2. Up to 14.4W/M(4.39W/feet)no need for additional heat sinking on Alu proile, if more than 14.4W/M(4.39W/feet) must be used the heat sinking
3. Live installation work is strictly prohibited during the installation of light strips, Do not use any acidic or alkaline adhesive to come into contact with this product, It is prohibited to directly touch the surface of the lamp strip with sharp tools
4. Please do not arbitrarily change the structure and connection length of the light strip to avoid affecting product use and preformance damage.

3. Power Supply

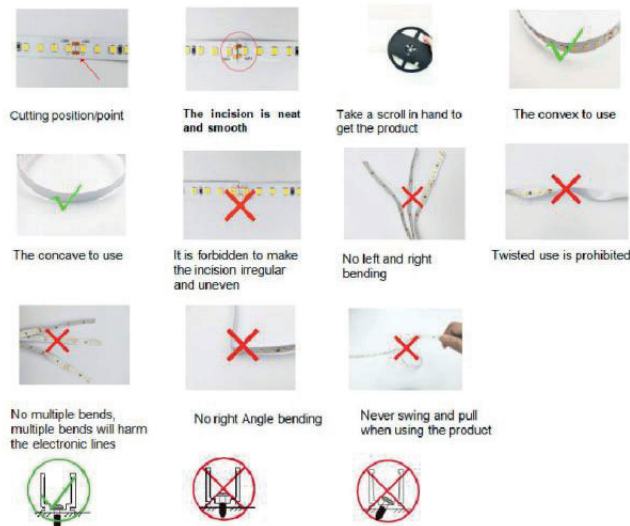
This LEDFlex has a power of 3W/m. The following table shows how many meters LEDFlex you can connect to one power supply.

rated power	Power supply 35W 24V	Power supply 60W 24V	Power supply 100W 24V	Power supply 150W 24V	Power supply 240W 24V	Power supply 320W 24V
LEDFlex 3W/m	9,3m	16m	26,6m	40m	64m	85,3m

LEDGO BV

Drieslaan 6 | B-8560 Wevelgem (Moorsele) | Tel +32 (0) 56 424 992
BTW BE 0824.326.685 | ING IBAN BE47 3630 7083 3480 | BIC BBRUBEBB

4. Precautions



Remarks:

- A cut mark is indicated on the PCB at the bottom of the product. Please use only the marked cut positions — do not cut at will.
- The figure above is for reference only and illustrates correct vs. incorrect operation. Please refer to the actual product for accuracy.

Please observe the following precautions:

- Only qualified electricians may install or service this product.
- Ensure the product is disconnected from the power supply and remains unpowered during installation.
- Do not operate while the power is on. Doing so may result in damage or product failure.
- Do not use organic chemical solvents on the product. Avoid exposure to strong acids or alkalis, as this may lead to damage or failure.
- Do not disassemble or modify the product. Do not touch the LED surfaces with sharp objects, as this can cause damage or malfunction.
- During splicing, ensure proper electrical connections with sufficient insulation. Waterproofing and anti-corrosion treatments must be applied to connection points to prevent failure.
- Minimum bending angle is 60°. Bending the strip tighter than this may result in damage. Before powering on, ensure proper installation and verify all parameters.
- Input voltage must not exceed the rated voltage by more than 0.5V.
- The power supply should not run at full load, to avoid damage.
- Installation and maintenance must be performed by professional electricians.
- During installation, do not apply lateral tension to the strip, as this can lead to damage or failure.
- For products with power $\geq 14.4\text{W/m}$, use cooling profiles to prevent overheating.
- Operating temperature: -20°C to $+45^{\circ}\text{C}$.
- Use outside this range may cause product failure.

LEDGO BV

Drieslaan 6 | B-8560 Wevelgem (Moorsele) | Tel +32 (0) 56 424 992
BTW BE 0824.326.685 | ING IBAN BE47 3630 7083 3480 | BIC BBRUBEBB