



WALKER II



Starting from 1 light source, Walker is designed to guide the light into two directions to provide a double light effect on the surface below. The light falls on the V-shaped inner part of the luminaire, breaking it open and throwing it to the front- and backside of the luminaire.

Specification	
Adjustability:	Fixed
Rating:	IP54

Performance	
LED Maintenance:	L70>60,000h
CRI:	90
*Walker II W SP:	7W

Delivered Lumens	2700K	3000K
Walker II W:	429Lm	457Lm

Listing

ETL certified to US and Canadian safety standards.

Warranty

5-year limited warranty.

Ordering

ALL BOXES MUST BE FILLED IN TO CORRECTLY ORDER

Example: WKWL-SP27FX-A-PXINCND-120

Luminaire	Size	Power*	CCT	Function	Finish	Installation	Application	Controls***
WKW WALKER II (Wall)	L Long - 150mm / 5 ²⁹ / ₃₂ " wide	SP Standard Power	27 2700K 30 3000K	FX Fixed Wall, Exterior Use	A Alu Grey A-N Alu Grey - Dark Grey N Dark Grey N-GC Dark Grey - Gold Colored	PX Coverplate for 4" junction box in corresponding finish NA No optional accessory; utilizing 1/2" EMT install	INC Integral Power Supply	ND-120 Non-Dim 120V

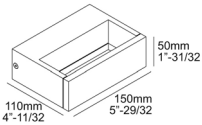
*** Contact factory for additional dimming options.

Related Products

Walker II (bollard), Mono, Tiga, Topix L X

Finish Options

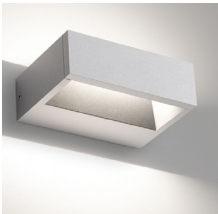
WALKER II W L



ALU GREY



DARK GREY



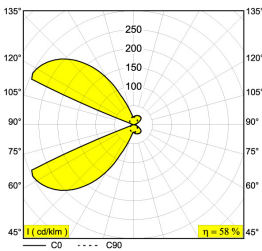
ALU GREY - DARK GREY



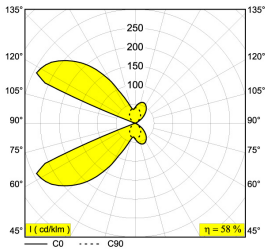
DARK GREY - GOLD
COLORED

Photometric Data

WALKER II W L



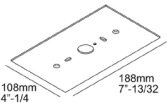
ALU Grey / Dark Grey / White



ALU Grey - Dark Grey /
Dark Grey-Gold Colored

Installation Options

PX - COVERPLATE S 125



ALU Grey, Dark Grey, or White
For Walker II W L; requires 4" J-Box

Driver Options

- ND
- Dimming Control NON DIMMABLE
 - Power Factor @ Full Load >0.5
 - Efficiency @ Full Load ≥74
 - THD @ Full Load <15%

As technology changes, please use information above as guidance. For most recent updated information please contact factory. Specifications subject to change without notice.