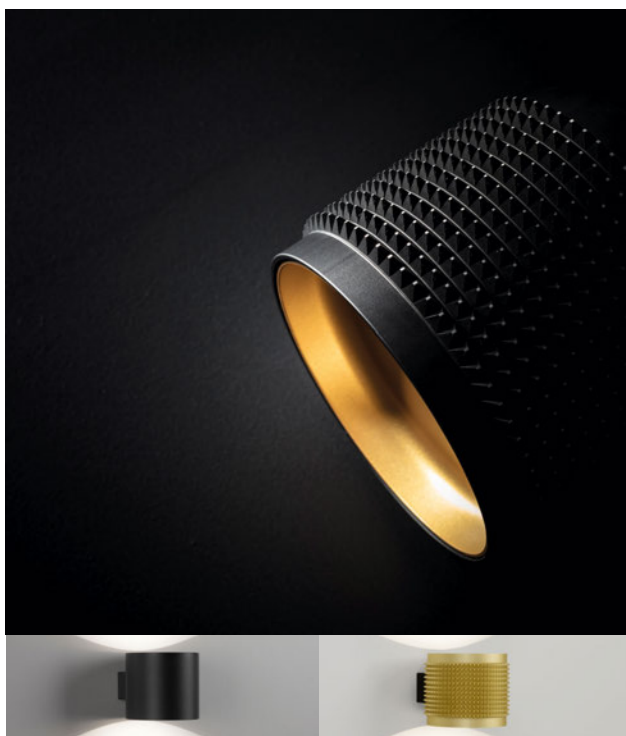


ORBIT



As a Design Plus Award winner in 2000, the Orbit has been a favourite in the wall mounted range of Delta Light for many years. Now its successor has been developed as a LED solution, making Orbit future proof. This wall mounted family comes in two versions, Orbit Led and Orbit Punk. Orbit combines two LEDs for up and downlight with a lens, which results in a distinctive light pattern on the wall. Finished in either standard lacquered finish or with the typical Punk look.

Specification	
Installation Method:	1/2" EMT or 4" J-Box
Adjustability:	Fixed
Rating:	IP20

Performance	
LED Maintenance:	L90>50,000h
McAdam Step:	2
CRI:	90
*SP:	2 x 3.2W

Delivered Lumens	2700K	3000K	3500K
Orbit Punk:	382Lm	397Lm	410Lm
Orbit Smooth:	382Lm	397Lm	410Lm

Listing

ETL certified to US and Canadian safety standards.

Warranty

5-year limited warranty.

Ordering

ALL BOXES MUST BE FILLED IN TO CORRECTLY ORDER

Example: OBT-SP30FIP-GC-B-MKRMTD1-UNV

Luminaire	Power	CCT	Function	Style	Finish	Installation	Application	Controls***
OBT ORBIT	SP Standard Power	27 2700K	FI Fixed, Interior Use	P Punk	BP-MMAT Black Pure-Gold Matte	MK Mud kit into drywall over 4" junction box" junction box NA No optional accessory; utilizing 1/2" EMT install	RMT Remote Power Supply	D1-UNV 0-10V dim 120-277V D8-120 FE ELV dim 120V
		30 3000K		S Smooth	GC-B Gold Colored-Black			
		35 3500K			B-MMAT Black-Gold Matte W-W White-White			

*** Contact factory for additional dimming options.


Related Products

Tiga In (interior), Tiga (exterior), Punk C (pendant)

Finish Options

ORBIT PUNK







BLACK PURE-GOLD MATTE



GOLD COLORED-BLACK



SPIKE DETAIL




SPIKE DETAIL

ORBIT SMOOTH





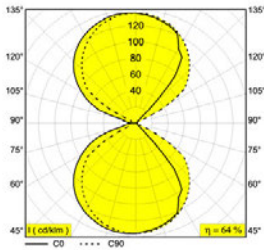
BLACK-GOLD MATTE



WHITE-WHITE

Photometric Data

ORBIT



Accessories Options

REMOTE DRIVER (With Controls D8)

A: 8" x B: 2"-1/2 x C: 2"-1/2
A: 203mm x B: 64mm x C: 64mm

- For Remote application
- ETL Listed
- Damp rated



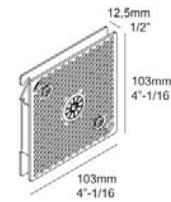
REMOTE DRIVER (With Controls D1)

A: 8" x B: 2"-3/16 x C: 4"-1/4
A: 203mm x B: 72mm x C: 108mm

- For Remote application
- ETL Listed
- Damp rated



MK - MUD KIT 1



Requires 4" junction box

 DELTALIGHT®

www.deltalight.com

ORBIT Ver 3 8.24.23

2



Driver Options

D1

- Dimming Control 0-10V
- Dimming Range 1-100%
- Dim to off yes at 0.7mA
- Power Factor @ Full Load >0.9
- Efficiency @ Full Load ≥87
- THD @ Full Load <20%
- Title 24 Compliant

Dimmer Compatibility

- Leviton IP710-DLZ
- Lutron DDTV-XX
- WattStopper ADF-120277
- Synergy Lighting Controls ISD BC

D8

- Dimming Control Phase Control
- Dimming Range 10-100%
- Dim to off no
- Power Factor @ Full Load >0.9
- Efficiency @ Full Load ≥78
- THD @ Full Load <12%

Dimmer Compatibility

- Leviton IPE04-1LZ
- Lutron DVELV-300P

As technology changes, please use information above as guidance. For most recent updated information please contact factory. Specifications subject to change without notice.