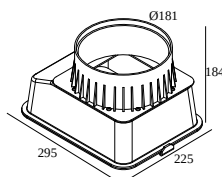
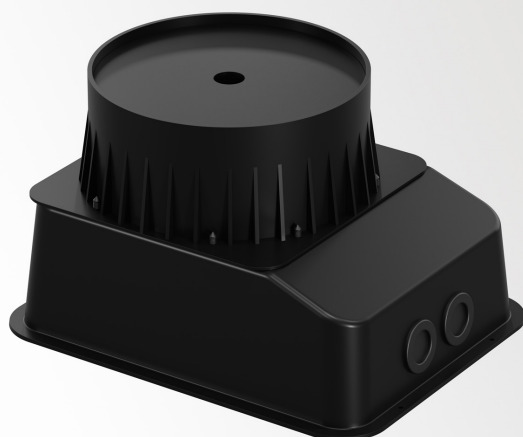


## LOGIC 190 R BOX

30210 0010



 [Visualizza sul sito web](#)



### Informazioni generali

<b>DIMENSIONE DEL FORO (MM)</b>	rettangolo - 300 x 230
<b>PROFONDITÀ DI INCASSO (MM)</b>	190
<b>PESO (KG)</b>	1
<b>INFORMAZIONI</b>	INCL.BASE PLATE max.500kg

Per istruzioni di installazione dettagliate, consultare il manuale : [30210\\_0010\\_HAND.pdf](#)

### Dove usato

<b>30211 9210</b>	LOGIC 190 R 92714
<b>30211 9215</b>	LOGIC 190 R 92714 DIM5
<b>30211 9220</b>	LOGIC 190 R 92726
<b>30211 9225</b>	LOGIC 190 R 92726 DIM5
<b>30211 9230</b>	LOGIC 190 R 92747
<b>30211 9235</b>	LOGIC 190 R 92747 DIM5
<b>30211 9310</b>	LOGIC 190 R 93014
<b>30211 9315</b>	LOGIC 190 R 93014 DIM5
<b>30211 9320</b>	LOGIC 190 R 93026
<b>30211 9325</b>	LOGIC 190 R 93026 DIM5
<b>30211 9330</b>	LOGIC 190 R 93047
<b>30211 9335</b>	LOGIC 190 R 93047 DIM5
<b>30211 9410</b>	LOGIC 190 R 94014
<b>30211 9415</b>	LOGIC 190 R 94014 DIM5
<b>30211 9420</b>	LOGIC 190 R 94026
<b>30211 9425</b>	LOGIC 190 R 94026 DIM5
<b>30211 9430</b>	LOGIC 190 R 94047
<b>30211 9435</b>	LOGIC 190 R 94047 DIM5
<b>30212 9210</b>	LOGIC 190 R HONEYCOMB 92714
<b>30212 9215</b>	LOGIC 190 R HONEYCOMB 92714 DIM5
<b>30212 9220</b>	LOGIC 190 R HONEYCOMB 92726
<b>30212 9225</b>	LOGIC 190 R HONEYCOMB 92726 DIM5
<b>30212 9230</b>	LOGIC 190 R HONEYCOMB 92747
<b>30212 9235</b>	LOGIC 190 R HONEYCOMB 92747 DIM5
<b>30212 9310</b>	LOGIC 190 R HONEYCOMB 93014
<b>30212 9315</b>	LOGIC 190 R HONEYCOMB 93014 DIM5
<b>30212 9320</b>	LOGIC 190 R HONEYCOMB 93026
<b>30212 9325</b>	LOGIC 190 R HONEYCOMB 93026 DIM5
<b>30212 9330</b>	LOGIC 190 R HONEYCOMB 93047

# DELTALIGHT

## LOGIC 190 R BOX

30210 0010

<b>30212 9335</b>	LOGIC 190 R HONEYCOMB 93047 DIM5
<b>30212 9410</b>	LOGIC 190 R HONEYCOMB 94014
<b>30212 9415</b>	LOGIC 190 R HONEYCOMB 94014 DIM5
<b>30212 9420</b>	LOGIC 190 R HONEYCOMB 94026
<b>30212 9425</b>	LOGIC 190 R HONEYCOMB 94026 DIM5
<b>30212 9430</b>	LOGIC 190 R HONEYCOMB 94047
<b>30212 9435</b>	LOGIC 190 R HONEYCOMB 94047 DIM5
<b>30213 9200</b>	LOGIC 190 R LINEAR 927
<b>30213 9205</b>	LOGIC 190 R LINEAR 927 DIM5
<b>30213 9300</b>	LOGIC 190 R LINEAR 930
<b>30213 9305</b>	LOGIC 190 R LINEAR 930 DIM5
<b>30213 9400</b>	LOGIC 190 R LINEAR 940
<b>30213 9405</b>	LOGIC 190 R LINEAR 940 DIM5
<b>30215 9200</b>	LOGIC 190 R WALLWASH 927
<b>30215 9205</b>	LOGIC 190 R WALLWASH 927 DIM5
<b>30215 9300</b>	LOGIC 190 R WALLWASH 930
<b>30215 9305</b>	LOGIC 190 R WALLWASH 930 DIM5
<b>30215 9400</b>	LOGIC 190 R WALLWASH 940
<b>30215 9405</b>	LOGIC 190 R WALLWASH 940 DIM5
<b>30216 9210</b>	LOGIC 190 R OK 92714
<b>30216 9215</b>	LOGIC 190 R OK 92714 DIM5
<b>30216 9220</b>	LOGIC 190 R OK 92726
<b>30216 9225</b>	LOGIC 190 R OK 92726 DIM5
<b>30216 9230</b>	LOGIC 190 R OK 92747
<b>30216 9235</b>	LOGIC 190 R OK 92747 DIM5
<b>30216 9310</b>	LOGIC 190 R OK 93014
<b>30216 9315</b>	LOGIC 190 R OK 93014 DIM5
<b>30216 9320</b>	LOGIC 190 R OK 93026
<b>30216 9325</b>	LOGIC 190 R OK 93026 DIM5
<b>30216 9330</b>	LOGIC 190 R OK 93047
<b>30216 9335</b>	LOGIC 190 R OK 93047 DIM5
<b>30216 9410</b>	LOGIC 190 R OK 94014
<b>30216 9415</b>	LOGIC 190 R OK 94014 DIM5
<b>30216 9420</b>	LOGIC 190 R OK 94026
<b>30216 9425</b>	LOGIC 190 R OK 94026 DIM5
<b>30216 9430</b>	LOGIC 190 R OK 94047
<b>30216 9435</b>	LOGIC 190 R OK 94047 DIM5
<b>30217 9210</b>	LOGIC 190 R OK HONEYCOMB 92714
<b>30217 9215</b>	LOGIC 190 R OK HONEYCOMB 92714 DIM5
<b>30217 9220</b>	LOGIC 190 R OK HONEYCOMB 92726
<b>30217 9225</b>	LOGIC 190 R OK HONEYCOMB 92726 DIM5
<b>30217 9230</b>	LOGIC 190 R OK HONEYCOMB 92747
<b>30217 9235</b>	LOGIC 190 R OK HONEYCOMB 92747 DIM5
<b>30217 9310</b>	LOGIC 190 R OK HONEYCOMB 93014
<b>30217 9315</b>	LOGIC 190 R OK HONEYCOMB 93014 DIM5
<b>30217 9320</b>	LOGIC 190 R OK HONEYCOMB 93026
<b>30217 9325</b>	LOGIC 190 R OK HONEYCOMB 93026 DIM5
<b>30217 9330</b>	LOGIC 190 R OK HONEYCOMB 93047
<b>30217 9335</b>	LOGIC 190 R OK HONEYCOMB 93047 DIM5
<b>30217 9410</b>	LOGIC 190 R OK HONEYCOMB 94014
<b>30217 9415</b>	LOGIC 190 R OK HONEYCOMB 94014 DIM5
<b>30217 9420</b>	LOGIC 190 R OK HONEYCOMB 94026
<b>30217 9425</b>	LOGIC 190 R OK HONEYCOMB 94026 DIM5
<b>30217 9430</b>	LOGIC 190 R OK HONEYCOMB 94047
<b>30217 9435</b>	LOGIC 190 R OK HONEYCOMB 94047 DIM5
<b>30218 9200</b>	LOGIC 190 R OK LINEAR V 927
<b>30218 9205</b>	LOGIC 190 R OK LINEAR V 927 DIM5
<b>30218 9300</b>	LOGIC 190 R OK LINEAR V 930
<b>30218 9305</b>	LOGIC 190 R OK LINEAR V 930 DIM5
<b>30218 9400</b>	LOGIC 190 R OK LINEAR V 940
<b>30218 9405</b>	LOGIC 190 R OK LINEAR V 940 DIM5
<b>30219 9200</b>	LOGIC 190 R OK LINEAR H 927
<b>30219 9205</b>	LOGIC 190 R OK LINEAR H 927 DIM5
<b>30219 9300</b>	LOGIC 190 R OK LINEAR H 930
<b>30219 9305</b>	LOGIC 190 R OK LINEAR H 930 DIM5
<b>30219 9400</b>	LOGIC 190 R OK LINEAR H 940
<b>30219 9405</b>	LOGIC 190 R OK LINEAR H 940 DIM5
<b>30220 9200</b>	LOGIC 190 R OK WALLWASH 927
<b>30220 9205</b>	LOGIC 190 R OK WALLWASH 927 DIM5
<b>30220 9300</b>	LOGIC 190 R OK WALLWASH 930
<b>30220 9305</b>	LOGIC 190 R OK WALLWASH 930 DIM5
<b>30220 9400</b>	LOGIC 190 R OK WALLWASH 940
<b>30220 9405</b>	LOGIC 190 R OK WALLWASH 940 DIM5
<b>30221 9210</b>	LOGIC 190 R SP 92708
<b>30221 9215</b>	LOGIC 190 R SP 92708 DIM5

# DELTALIGHT

## LOGIC 190 R BOX

30210 0010

<b>30221 9310</b>	LOGIC 190 R SP 93008
<b>30221 9315</b>	LOGIC 190 R SP 93008 DIM5
<b>30221 9410</b>	LOGIC 190 R SP 94008
<b>30221 9415</b>	LOGIC 190 R SP 94008 DIM5
<b>30222 9210</b>	LOGIC 190 R SP HONEYCOMB 92708
<b>30222 9215</b>	LOGIC 190 R SP HONEYCOMB 92708 DIM5
<b>30222 9310</b>	LOGIC 190 R SP HONEYCOMB 93008
<b>30222 9315</b>	LOGIC 190 R SP HONEYCOMB 93008 DIM5
<b>30222 9410</b>	LOGIC 190 R SP HONEYCOMB 94008
<b>30222 9415</b>	LOGIC 190 R SP HONEYCOMB 94008 DIM5
<b>30223 9210</b>	LOGIC 190 R OK SP 92708
<b>30223 9215</b>	LOGIC 190 R OK SP 92708 DIM5
<b>30223 9310</b>	LOGIC 190 R OK SP 93008
<b>30223 9315</b>	LOGIC 190 R OK SP 93008 DIM5
<b>30223 9410</b>	LOGIC 190 R OK SP 94008
<b>30223 9415</b>	LOGIC 190 R OK SP 94008 DIM5
<b>30224 9210</b>	LOGIC 190 R OK SP HONEYCOMB 92708
<b>30224 9215</b>	LOGIC 190 R OK SP HONEYCOMB 92708 DIM5
<b>30224 9310</b>	LOGIC 190 R OK SP HONEYCOMB 93008
<b>30224 9315</b>	LOGIC 190 R OK SP HONEYCOMB 93008 DIM5
<b>30224 9410</b>	LOGIC 190 R OK SP HONEYCOMB 94008
<b>30224 9415</b>	LOGIC 190 R OK SP HONEYCOMB 94008 DIM5
<b>30225 9210</b>	LOGIC 190 R REFL 92718
<b>30225 9215</b>	LOGIC 190 R REFL 92718 DIM5
<b>30225 9220</b>	LOGIC 190 R REFL 92732
<b>30225 9225</b>	LOGIC 190 R REFL 92732 DIM5
<b>30225 9230</b>	LOGIC 190 R REFL 92745
<b>30225 9235</b>	LOGIC 190 R REFL 92745 DIM5
<b>30225 9310</b>	LOGIC 190 R REFL 93018
<b>30225 9315</b>	LOGIC 190 R REFL 93018 DIM5
<b>30225 9320</b>	LOGIC 190 R REFL 93032
<b>30225 9325</b>	LOGIC 190 R REFL 93032 DIM5
<b>30225 9330</b>	LOGIC 190 R REFL 93045
<b>30225 9335</b>	LOGIC 190 R REFL 93045 DIM5
<b>30225 9410</b>	LOGIC 190 R REFL 94018
<b>30225 9415</b>	LOGIC 190 R REFL 94018 DIM5
<b>30225 9420</b>	LOGIC 190 R REFL 94032
<b>30225 9425</b>	LOGIC 190 R REFL 94032 DIM5
<b>30225 9430</b>	LOGIC 190 R REFL 94045
<b>30225 9435</b>	LOGIC 190 R REFL 94045 DIM5
<b>30226 9210</b>	LOGIC 190 R REFL HONEYCOMB 92718
<b>30226 9215</b>	LOGIC 190 R REFL HONEYCOMB 92718 DIM5
<b>30226 9220</b>	LOGIC 190 R REFL HONEYCOMB 92732
<b>30226 9225</b>	LOGIC 190 R REFL HONEYCOMB 92732 DIM5
<b>30226 9230</b>	LOGIC 190 R REFL HONEYCOMB 92745
<b>30226 9235</b>	LOGIC 190 R REFL HONEYCOMB 92745 DIM5
<b>30226 9310</b>	LOGIC 190 R REFL HONEYCOMB 93018
<b>30226 9315</b>	LOGIC 190 R REFL HONEYCOMB 93018 DIM5
<b>30226 9320</b>	LOGIC 190 R REFL HONEYCOMB 93032
<b>30226 9325</b>	LOGIC 190 R REFL HONEYCOMB 93032 DIM5
<b>30226 9330</b>	LOGIC 190 R REFL HONEYCOMB 93045
<b>30226 9335</b>	LOGIC 190 R REFL HONEYCOMB 93045 DIM5
<b>30226 9410</b>	LOGIC 190 R REFL HONEYCOMB 94018
<b>30226 9415</b>	LOGIC 190 R REFL HONEYCOMB 94018 DIM5
<b>30226 9420</b>	LOGIC 190 R REFL HONEYCOMB 94032
<b>30226 9425</b>	LOGIC 190 R REFL HONEYCOMB 94032 DIM5
<b>30226 9430</b>	LOGIC 190 R REFL HONEYCOMB 94045
<b>30226 9435</b>	LOGIC 190 R REFL HONEYCOMB 94045 DIM5

Notes: