

SPY 39 TRIMLESS 92740

24121 9230 BRAT

AVAILABLE IN

BLACK 24121 9230 B

BRUSHED ALU 24121 9230 BRA

BRUSHED ANTHRACITE 24121 9230 BRAT

BRUSHED COPPER 24121 9230 BRCU

BRUSHED GOLD 24121 9230 BRG

BRUSHED OLD BRONZE 24121 9230 BROB

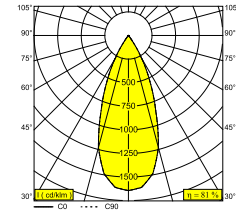
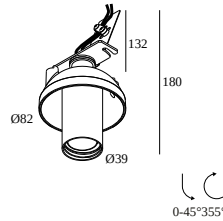
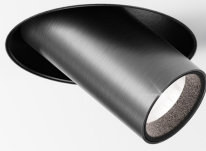
FLEMISH BRONZE 24121 9230 FBR

FLEMISH GOLD 24121 9230 FG

GOLD COLOURED 24121 9230 GC

PIANO BLACK 24121 9230 PB

WHITE 24121 9230 W



[View on website](#)



General info

LOCATION	indoor
INSTALLATION	Ceiling Recessed
CUTOUT SHAPE/SIZE (MM)	round - Ø KIT
RECESSED DEPTH (MM)	80
INGRESS PROTECTION	IP20
WEIGHT (KG)	0.3
ADJUSTABILITY	0° to 45° swiveling, 355° rotatable
INFORMATION	REFLECTOR WFL-40° EXCL.LED POWER SUPPLY 350-500mA-DC

Electrical info

CLASS	III
DIM TYPE	depending on power supply
ENERGY CLASS	E
CERTIFICATES	CB, ENEC

Lightsource info

LIGHTSOURCE NAME	LED
LIGHTSOURCE	LED array 5,8-8,6W / CRI>90 (R9: 60) / 2700K / 753-1041lm
TM-30 VALUES	rf: 89 / Rg: 100
SDCM	SDCM1
RISKGROUP	RG1
LM80	L90B10 > 50000
BEAMANGLE	40°
LED TECHNICS (LIGHT SOURCE)	1041lm // 8,6W // 121lm/W
LED TECHNICS (LUMINAIRE)	844lm // 9,9W // 85lm/W

Requirements

SPY 39 TUBE or VISOR 39
MOUNTING KIT SPY 39/52 TRIMLESS O.F.A.
MOUNTING KIT AIR 103
LED POWER SUPPLY 350 / 500mA-DC DIM (Remote)

DELTALIGHT

SPY 39 TRIMLESS 92740

24121 9230 BRAT

For detailed installation instructions, please consult the manual : [24121_XXX0_HAND.pdf](#)

CEILING COMPATIBILITY

Ceiling Type	Mounting Kit	
 System ceiling	 15212 2030 - MOUNTING KIT SPY 39/52 TRIMLESS O.F.A.	Required
 Plasterboard	 15212 2030 - MOUNTING KIT SPY 39/52 TRIMLESS O.F.A.	Required
 Stucanet	 15212 2030 - MOUNTING KIT SPY 39/52 TRIMLESS O.F.A.	Required
 Concrete + plaster	 15212 2030 - MOUNTING KIT SPY 39/52 TRIMLESS O.F.A.	Required
 Lintel + plaster	 15212 2030 - MOUNTING KIT SPY 39/52 TRIMLESS O.F.A.	Required
 Hollow-core slab + plaster	 15212 2030 - MOUNTING KIT SPY 39/52 TRIMLESS O.F.A.	Required
 Stretched ceiling	 15212 0080 - MOUNTING KIT SPY 39/52 TRIMLESS CSC	Required
	 15212 0160 - MOUNTING KIT SPY 39/52 TRIMLESS WSC	Required
 Ventilation in plasterboard	 29810 0100 - MOUNTING KIT SIDE AIR ONLY 1	Required
	 29810 0030 - MOUNTING KIT SIDE AIR 103	Required
	 29810 0070 - MOUNTING KIT NO AIR 103	Required
 Ventilation in concrete + plaster	 29810 0070 - MOUNTING KIT NO AIR 103	Required
	 29810 0200 - MOUNTING KIT TOP AIR ONLY 1	Required
	 29810 0230 - MOUNTING KIT TOP AIR 103	Required

FINISH YOUR SPECIFICATION

LED power supplies

of Fixtures



of fixtures indicates how many devices can be connected (min -> max) to the power supply. The values before and after the '|' correspond respectively with the minimum and maximum driving current. Values between brackets are applicable to 110V.

Min current | Max current

DELTALIGHT

SPY 39 TRIMLESS 92740

24121 9230 BRAT



300 48 350 ED1 LED POWER CONVERTER 48V-DC to 350 mA-DC / 15W DIM1

2

Dimtype: 1-10V

Cutout dimension (mm): 30



300 48 350 ED5 LED POWER CONVERTER 48V-DC to 350 mA-DC / 15W DIM5

2

Dimtype: DALI

Cutout dimension (mm): 45



300 48 350 MDL LED POWER CONVERTER 48V-DC to 350 mA-DC / 15W MDL

2

Dimtype: non-dimmable

Cutout dimension (mm): 30



300 48 350 WDL LED POWER CONVERTER 48V-DC to 350 mA-DC / 15W WDL

2

Dimtype: WDL = wireless dimmable

Cutout dimension (mm): 45



300 48 500 ED1 LED POWER CONVERTER 48V-DC to 500 mA-DC / 22W DIM1

2

Dimtype: 1-10V

Cutout dimension (mm): 30



300 48 500 ED5 LED POWER CONVERTER 48V-DC to 500 mA-DC / 22W DIM5

2

Dimtype: DALI

Cutout dimension (mm): 45



300 48 500 MDL LED POWER CONVERTER 48V-DC to 500 mA-DC / 22W MDL

2

Dimtype: non-dimmable

Cutout dimension (mm): 30



300 48 500 WDL LED POWER CONVERTER 48V-DC to 500 mA-DC / 22W WDL

2

Dimtype: WDL = wireless dimmable

Cutout dimension (mm): 45



300 90 61 LED POWER SUPPLY MULTI-POWER DIM6

2 | 2

Dimtype: mains (phase cut-off) or push button

Cutout dimension (mm): 56



300 90 63 LED POWER SUPPLY MULTI-POWER DIM9

4(4) | 4(4)

Dimtype: 1-10V or DALI or push button

Cutout dimension (mm): 82

DELTALIGHT

SPY 39 TRIMLESS 92740

24121 9230 BRAT



300 90 64 LED POWER SUPPLY MULTI-POWER DIM7

2(2) | 2(1)

Dimtype: 1-10V or push button

Cutout dimension (mm): 72



300 90 67 LED POWER CONVERTER 24V-DC TO MULTI CURRENT 48W DIM9

2 | -

Dimtype: 1-10V or DALI or push button



300 90 68 LED POWER SUPPLY MULTI-POWER DIM5

2(2) | 2(1)

Dimtype: DALI

Cutout dimension (mm): 72



300 90 69 LED POWER SUPPLY MULTI-POWER HV DIM9

2->6(6) | 6(4)

Dimtype: 1-10V or DALI or push button

Cutout dimension (mm): 84



300 90 124 LED POWER SUPPLY MULTI-POWER DIM7

3(2) | 2(1)

Dimtype: 1-10V or push button

Cutout dimension (mm): 55



300 90 125 LED POWER SUPPLY MULTI-POWER MINI DIM5

2(2) | 2(1)

Dimtype: DALI

Cutout dimension (mm): 55



300 90 135 LED POWER SUPPLY MULTI-POWER HV

3->4 | 2->4

Dimtype: non-dimmable

Cutout dimension (mm): 90

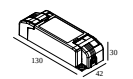


21012 0010 LED POWER SUPPLY MULTI POWER

2 | 2

Dimtype: non-dimmable

Cutout dimension (mm): 50

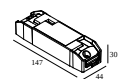


21012 0021 LED POWER SUPPLY MULTI POWER DIM1

3 | 3

Dimtype: 1-10V

Cutout dimension (mm): 54



21012 0035 LED POWER SUPPLY MULTI POWER DIM5

3 | 3

Dimtype: DALI

Cutout dimension (mm): 54

DELTALIGHT

SPY 39 TRIMLESS 92740

24121 9230 BRAT



21012 004W LED POWER SUPPLY MULTI-POWER WDL

4(4) | 3(3)

Dimtype: WDL = wireless dimmable

Cutout dimension (mm): 84



21012 005W LED POWER SUPPLY MULTI-POWER COMPACT WDL

3 | 3

Dimtype: WDL = wireless dimmable

Cutout dimension (mm): 54



21012 0268 LED POWER SUPPLY MULTI POWER 200-350 / 15W DIM8

2->2 | 0

Dimtype: mains (phase cut-off)

Cutout dimension (mm): 50



21012 0278 LED POWER SUPPLY MULTI POWER 500-700 / 20W DIM8

1

Dimtype: mains (phase cut-off)

Cutout dimension (mm): 55



21012 0288 LED POWER SUPPLY MULTI POWER 500-700 / 36W DIM8

2->3

Dimtype: mains (phase cut-off)

Cutout dimension (mm): 55



21012 0298 LED POWER SUPPLY MULTI POWER 250-900 / 20W DIM8

2 | 2

Dimtype: mains (phase cut-off)

Cutout dimension (mm): 48



21012 0308 LED POWER SUPPLY 350mA / 7,35W DIM8

1

Dimtype: mains (phase cut-off)

Cutout dimension (mm): 40



21012 0318 LED POWER SUPPLY 500mA / 10W DIM8

1

Dimtype: mains (phase cut-off)

Cutout dimension (mm): 40



21012 0480 LED POWER SUPPLY 350mA-DC / 17W IP68

2(2)

Dimtype: non-dimmable

Cutout dimension (mm): 60



21012 0500 LED POWER SUPPLY 500mA-DC / 24W IP68

2(1)

Dimtype: non-dimmable

Cutout dimension (mm): 60

DELTALIGHT

SPY 39 TRIMLESS 92740

24121 9230 BRAT



21032 0295 LED POWER CONVERTER 48V-DC to 350 mA-DC / 15W DIM5

2

Dimtype: DALI

Cutout dimension (mm): 30



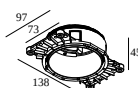
21032 0305 LED POWER CONVERTER 48V-DC to 500 mA-DC / 22W DIM5

2

Dimtype: DALI

Cutout dimension (mm): 30

Mounting kits



15212 2030 MOUNTING KIT SPY 39/52 TRIMLESS O.F.A.

Cutout dimension (mm): 105

Mounting kits stretched ceiling



15212 0080 MOUNTING KIT SPY 39/52 TRIMLESS CSC



15212 0160 MOUNTING KIT SPY 39/52 TRIMLESS WSC

Mounting kits side air + light



29810 0030 MOUNTING KIT SIDE AIR 103

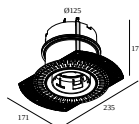
Cutout dimension (mm): 168

DELTALIGHT

SPY 39 TRIMLESS 92740

24121 9230 BRAT

Mounting kits top air + light

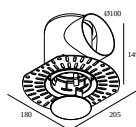


29810 0230 MOUNTING KIT TOP AIR 103



Cutout dimension (mm): 135

Mounting kits side air only

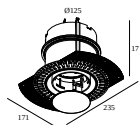


29810 0100 MOUNTING KIT SIDE AIR ONLY 1



Cutout dimension (mm): 168

Mounting kits top air only



29810 0200 MOUNTING KIT TOP AIR ONLY 1



Cutout dimension (mm): 135

Mounting kits no air

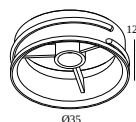


29810 0070 MOUNTING KIT NO AIR 103



Cutout dimension (mm): 168

Light altering devices



24144 0030 B VISOR 39 B



DELTALIGHT

SPY 39 TRIMLESS 92740

24121 9230 BRAT

Finish your product



24144 0010 B SPY 39 TUBE B

24144 0010 FBR SPY 39 TUBE FBR

24144 0010 FG SPY 39 TUBE FG

24144 0010 GC SPY 39 TUBE GC

24144 0010 W SPY 39 TUBE W



24144 0070 SPY 39 TUBE SBL

Notes: