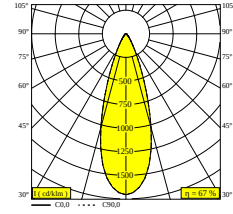
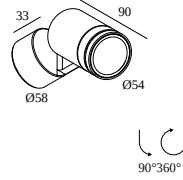


SPIX M 24V 93030

29716 9330 PGR

AVAILABLE IN
ANTHRACITE 29716 9330 N
PINE GREEN 29716 9330 PGR



 [View on website](#)



General info

LOCATION	outdoor
INSTALLATION	Floor Surface mounted, Wall Surface mounted
INGRESS PROTECTION	IP65
PROTECTION AGAINST MECHANICAL IMPACT	IK05
WEIGHT (KG)	0.6
ADJUSTABILITY	90° swiveling, 360° rotatable
INFORMATION	LENS FL-30° EXCLLED POWER SUPPLY 24V-DC (non-dimmable or dimmable with PWM output)

Electrical info

ELECTRICAL	24V-DC
CLASS	III
ENERGY CLASS	G
CERTIFICATES	CB, ENEC

Lightsource info

LIGHTSOURCE NAME	LED
LIGHTSOURCE	LED array 8,2W / CRI>90 (R9: 55) / 3000K / 677lm
TM-30 VALUES	rf: 92 / Rg: 98
SDCM	SDCM2
RISKGROUP	RG2 (threshold 0,6m)
LM80	L90B10 > 41000
BEAMANGLE	30°
LED TECHNICS (LIGHT SOURCE)	677lm // 8,2W // 83lm/W
LED TECHNICS (LUMINAIRE)	454lm // 9,4W // 48lm/W

Requirements

LED POWER SUPPLY 24V-DC

Accessories

KAP STRIPER

For detailed installation instructions, please consult the manual : [29716_XXX0_HAND.pdf](#)

DELTALIGHT

SPIX M 24V 93030

29716 9330 PGR

FINISH YOUR SPECIFICATION

LED power supplies

of Fixtures



of fixtures indicates how many devices can be connected (min -> max) to the power supply. The values before and after the '|' correspond respectively with the minimum and maximum driving current. Values between brackets are applicable to 110V.

Min current | Max current

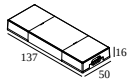


300 89 24 150 LED POWER SUPPLY 24V-DC / 150W

15

Dimtype: non-dimmable

Cutout dimension (mm): 75

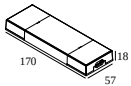


21012 0160 LED POWER SUPPLY 24V-DC / 24W

2

Dimtype: non-dimmable

Cutout dimension (mm): 55

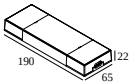


21012 0171 LED POWER SUPPLY 24V-DC / 60W DIM1

6

Dimtype: 1-10V

Cutout dimension (mm): 61

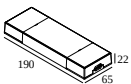


21012 0181 LED POWER SUPPLY 24V-DC / 90W DIM1

9

Dimtype: 1-10V

Cutout dimension (mm): 70



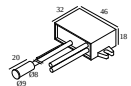
21012 0191 LED POWER SUPPLY 24V-DC / 120W DIM1

12

Dimtype: 1-10V

Cutout dimension (mm): 70

Miscellaneous control equipment



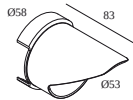
21032 0320 AMBIENT LIGHT SENSOR AND 24V DIMMER (PWM)

DELTALIGHT

SPIX M 24V 93030

29716 9330 PGR

Light altering devices



223 00 10 B KAP STRIPER B



Notes: